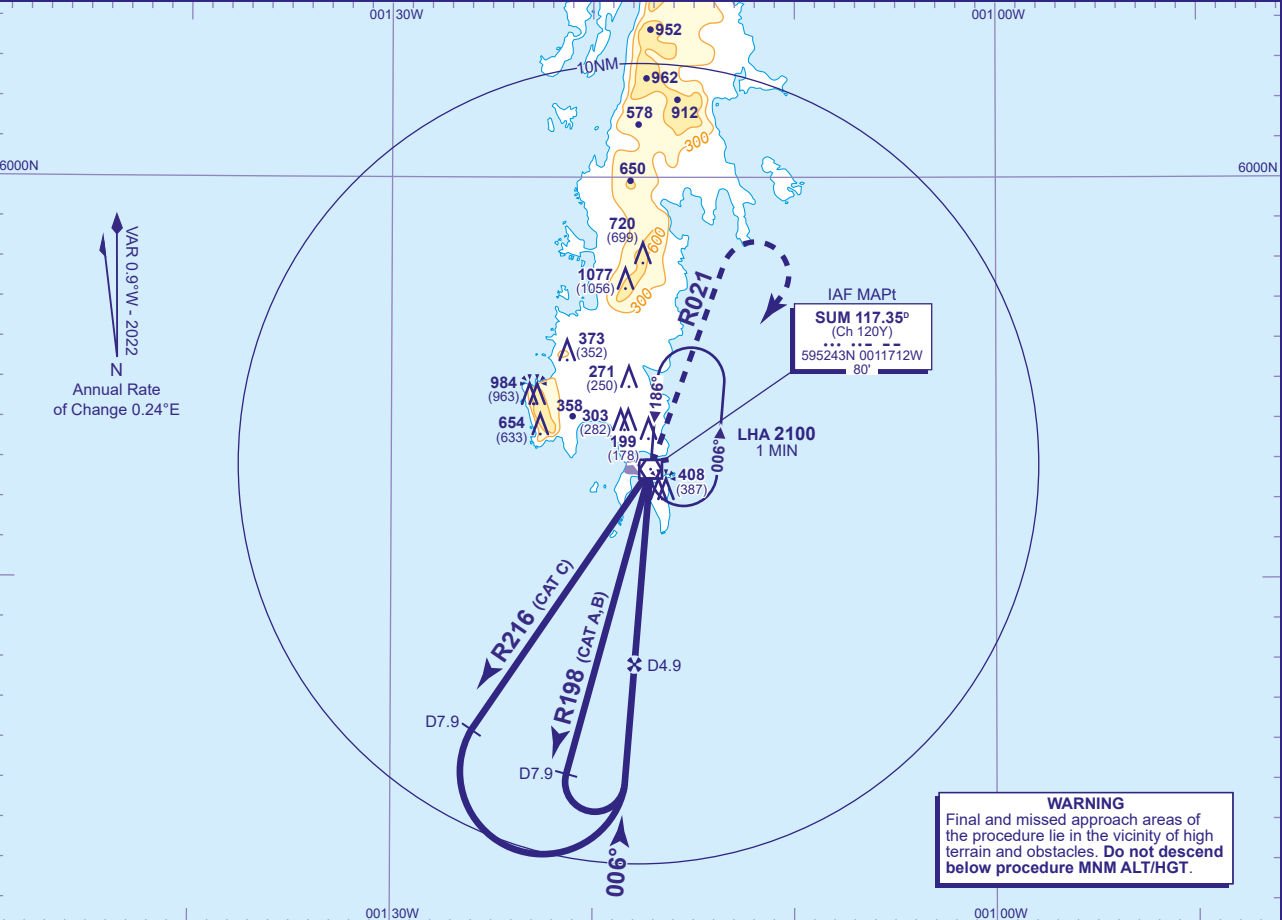


INSTRUMENT APPROACH CHART - ICAO

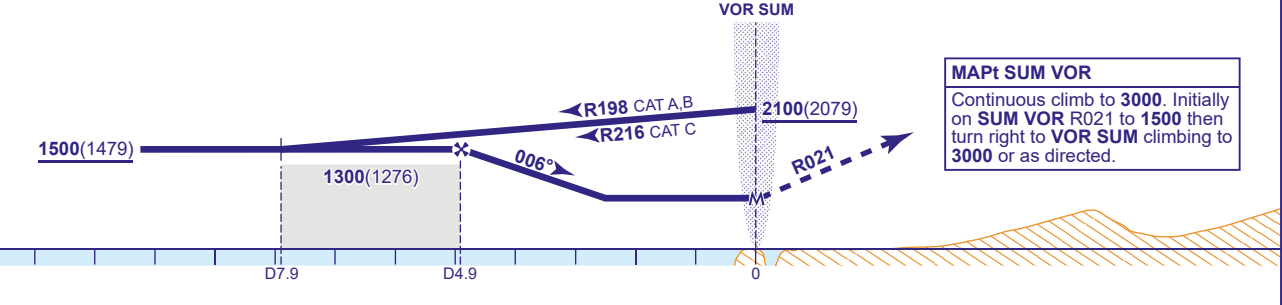
SUMBURGH  
VOR/DME 006°  
TO AERODROME  
(ACFT CAT A,B,C)

<div><div>MSA</div><div><div>24</div><div>090°</div><div>21</div></div><div>VOR SUM</div></div>	TWR 118.255	SUMBURGH TOWER	AD ELEVATION 21	TRANSITION ALTITUDE 6000
	RAD 131.300, 123.155	SUMBURGH RADAR		
	ATIS 125.855	SUMBURGH INFORMATION	OBSTACLE ELEVATION 1077 AMSL (1056) (ABOVE THR)	
	AFIS 118.255	SUMBURGH INFORMATION	BEARINGS ARE MAGNETIC	



RECOMMENDED PROFILE Gradient 5.23%, 318FT/NM		
SUM DME	4	3
ALT(HGT)	1230(1209)	910(889)

Arrival **not below MSA**. Shuttle in hold as necessary.



Aircraft Category		A	B	C	Rate of descent	G/S KT	160	140	120	100	80
OCA (OCH)	APPROACH TO VM(C)					FT/MIN	850	740	640	530	420
VM(C)OCA (OCH AAL)	Total Area	800(779)	1200(1179)	1400(1379)							
	Restricted (See Note)	800(779)	800(779)	1130(1109)							

**AIRCRAFT UNABLE TO RECEIVE DME**  
Advise ATC. Fly outbound on base turn procedure for 2.5MIN (CAT A,B) 2MIN (CAT C), then turn left to establish on the FAT. Once established descend to MDA(H).

**NOTE** Reduced VM(C) minima applies to aircraft which manoeuvre outside the quadrant north of RWY 09/27 C/L and west of RWY 15/33 C/L.

CHANGE (13/23): VOR/DME SUM RECALIBRATED. RADIALS. CHART TITLE.